

# What is RQ20 and why do we need it?



LUND  
UNIVERSITY

RQ20

Lund University's Research Quality Evaluation Project 2020



# From the RQ 20 Project Plan

## RQ20 – Aim and Task

RQ20 should provide a picture of how competitive the research of Lund University is in an international context. The evaluation is to look to the future by identifying strengths, weaknesses and development potential in all of the University's different research environments and in the organisations linked to these environments – for example, departments and faculties.

The aim of RQ20 is therefore to produce advisory documentation for the future, based on an analysis of the conditions within the University's different research environments.

# From the RQ 20 Project Plan

**RQ20 is LU's own process –  
not a response to rankings or an adaption to outside requirements**

Our starting point is that RQ20 is to benefit the reviewed activities: it should be possible for the evaluated environments (and the faculties and University management) to use the self-evaluation immediately for planning, operational descriptions and as documentation for funding applications both internally and externally.

# From the RQ 20 Project Plan

## **“Help to self-help”**

The aim is not to compare the research environments or to grade each one individually, instead, it is to contribute constructive observations on improvements and to recognise already accomplished achievements. Neither will RQ20 address direct financial benefits or distribution instruments. The aim is to detail the conditions at the different units and to draw conclusions at the panel level and at the university-wide level.

## Relation to RQ08

RQ20 is a significantly broadened follow-up of the earlier research evaluations RQ08 and RQ14.

The intention of RQ20 is also to be more prospective than the earlier evaluations.

One of the self-evaluation tasks is to mention – if applicable – major changes that have been undertaken within the research environment during the last decade.

## Relation to governmental evaluations

RQ20 is taking place at the same time as Swedish higher education policy is becoming more and more focused on the development and assessment of quality enhancement at universities, primarily by the Swedish Higher Education Authority (UKÄ) and with collective response from the Association of Swedish Higher Education Institutions (SUHF). The frameworks that UKÄ and SUHF have produced indicate the importance of self-initiated inventories and evaluations. RQ20 therefore fulfils a clear role. In addition, RQ20 takes this ambition further. The aim is to highlight and critically evaluate the organisation's qualities and ambitions and how they can be further developed.

# The RQ20 Phases

SPRING 2019  
PLANNING PHASE

AUTUMN 2019  
SELF-EVALUATION PHASE

SPRING 2020  
EXTERNAL ASSESSMENT PHASE

AUTUMN 2020  
FOLLOW-UP



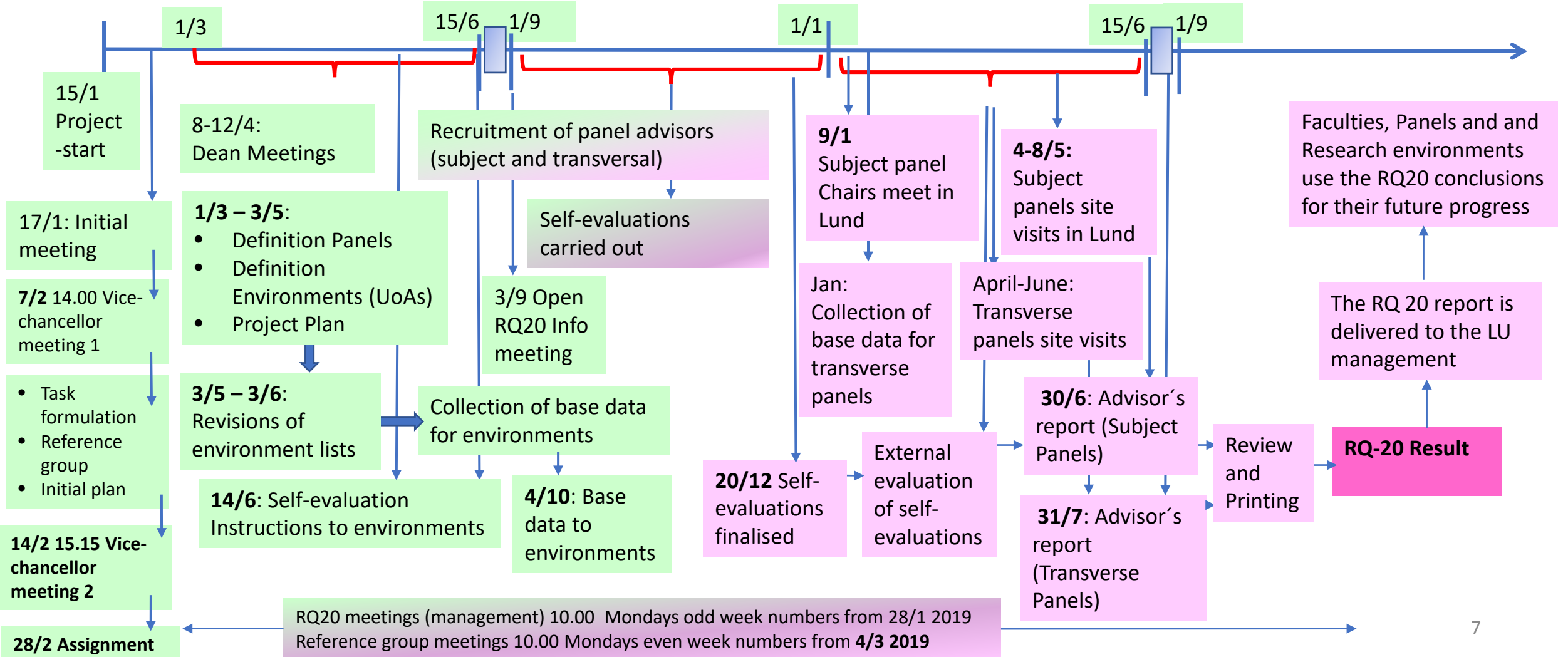
# RQ20 – GENERAL SCHEDULE

## SPRING 2019 PLANNING PHASE

## AUTUMN 2019 SELF-EVALUATION

## SPRING 2020 EXTERNAL ASSESSMENT

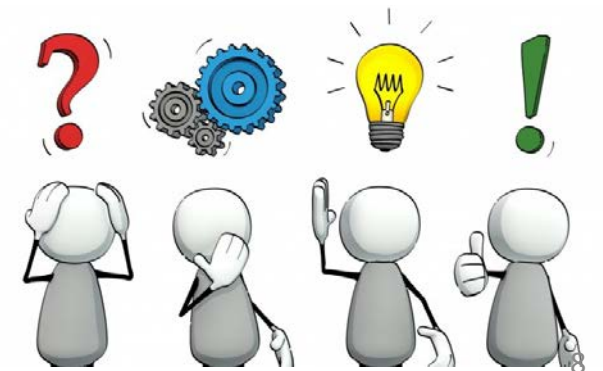
## AUTUMN 2020 FOLLOW-UP



## SPRING 2019 PLANNING PHASE

Main goals:

1. Define RQ20 structure and research environments
2. Identify and formulate evaluation dimensions used for self assessment
3. Produce basic information on the units' funding and activities (base data)

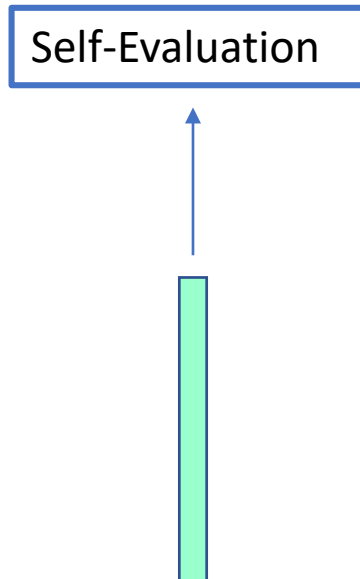




## What is a RQ20 research environment (Unit of Assessment) ?

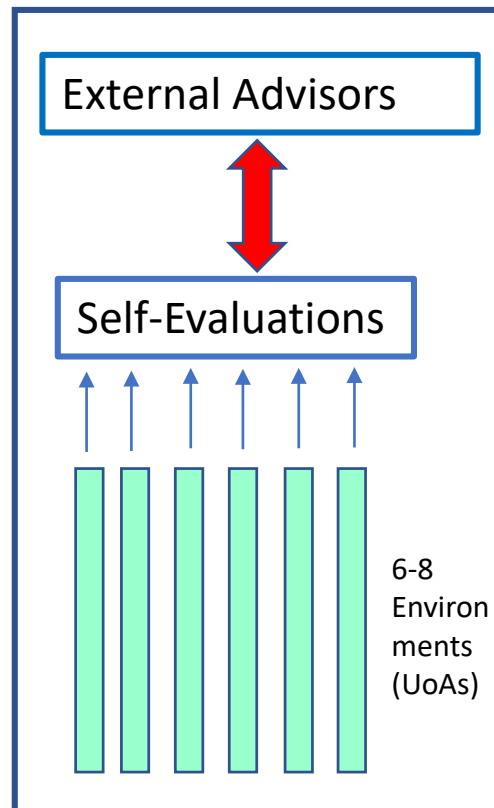
The *research environments (Units of assessment, UoA)* are primarily defined by the faculties and may in some cases be large and broad (which may be hard to break down into smaller units) and in other cases clearly defined. The definition of the research environments is decided on by the faculties in consultation with the RQ20 office. **We expect research environments to be homogenous and easily recognisable by those involved, but not too small.**

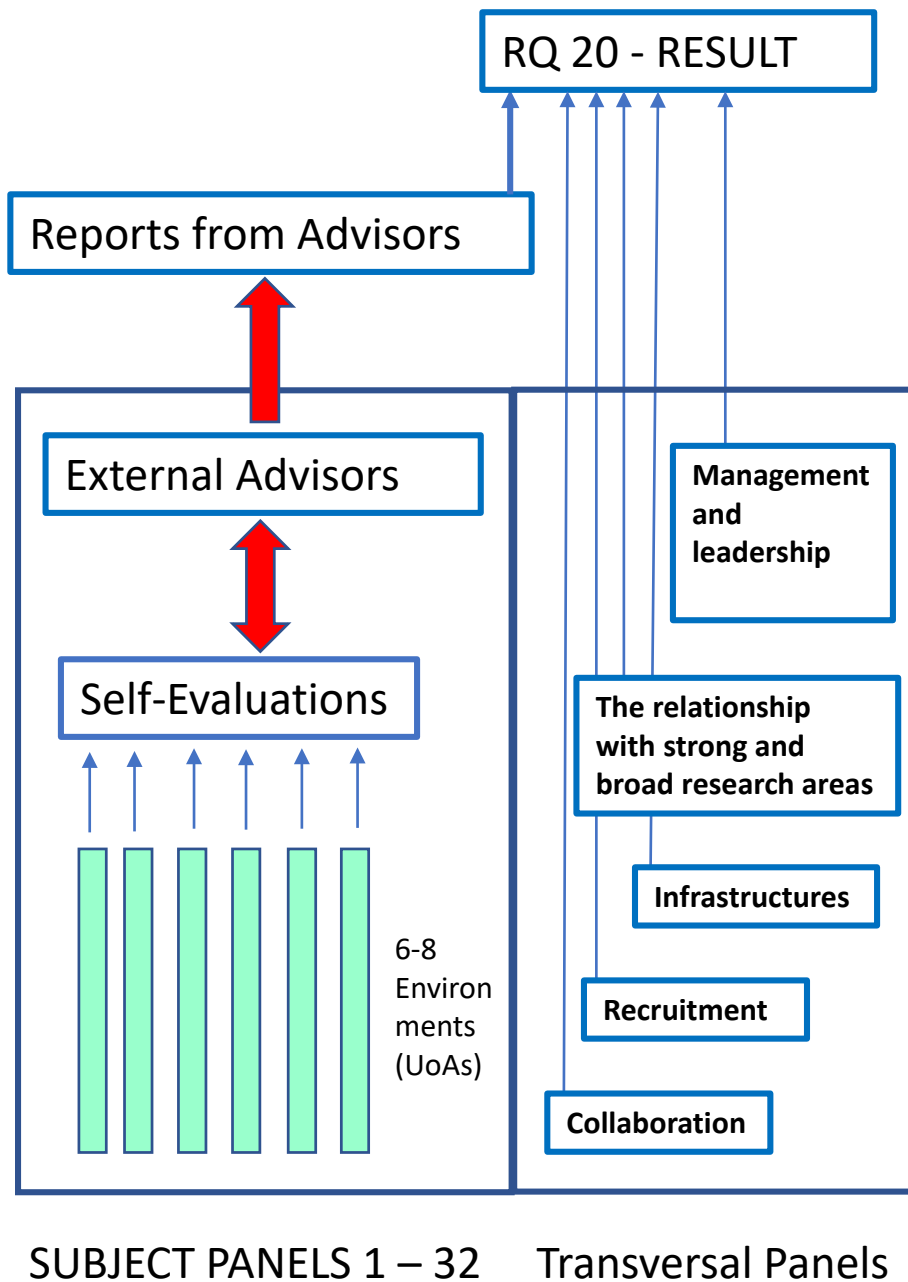
**We are aware that this homogeneity is sometimes very hard to achieve!**



## What is a RQ20 panel ?

The term (subject) panel is used in this project description for both a group of **linked research environments** during the self-evaluation phase (32 in all) and for the same group of research environments during the external assessment phase.





32 + 5 Panels  
 Panel turnover (Panel 1-32) c:a 200 Mkr  
 6-8 Research Environments (UoAs)/Panel  
 20-25 Researchers/UoA → 100 – 150  
 Researchers/Panel →  
 Approx. 4000-5000 researchers in total

Approx. 4-6 Advisors / Panel →  
 Around 200 Advisors in total

National Comparison (not exact)

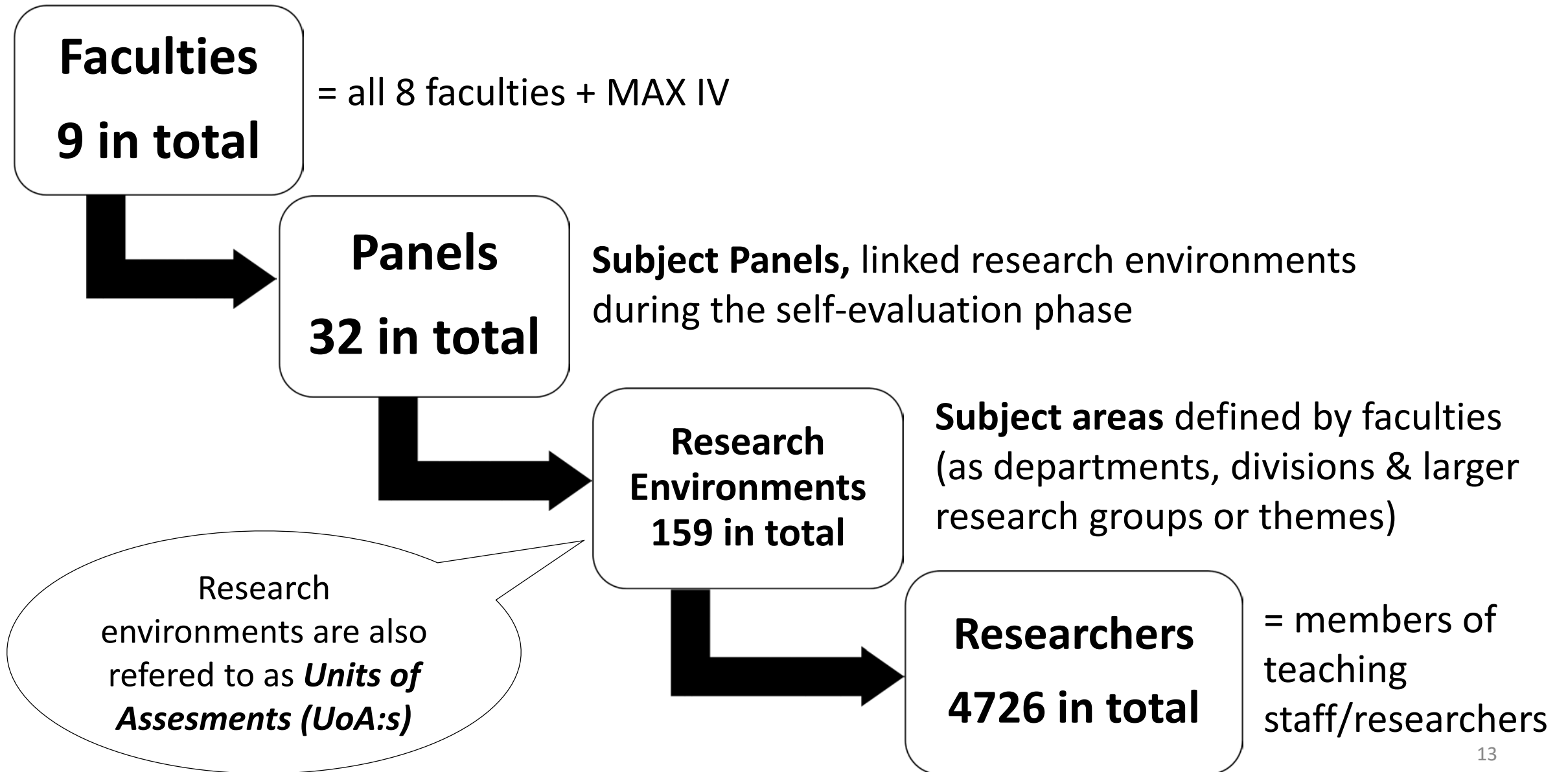
	SLU KON18	UU KOF17	GU RED19	LU RQ20
No Panels	11	19	42	35+5
No Advisors	100	130	130	200
No Researchers ~	2000	4000	4000	5000

Employees at Lund University	
Total Number Approximately	7 400
A Professors	800
B Teachers, Researchers and doctorate students	4 100
C Technical and Administrative Staff	2 500

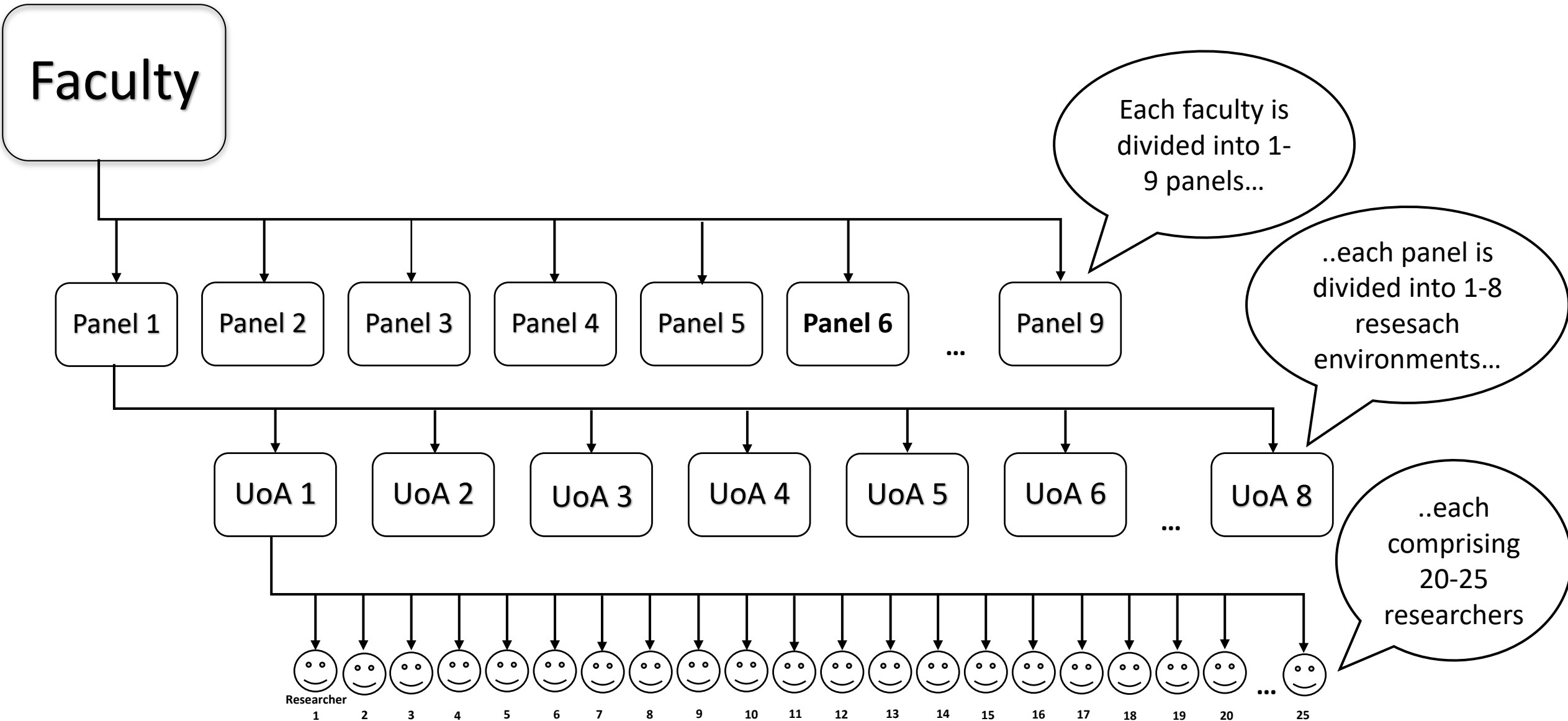


Research Staff A+B above per faculty	Economy	Central Admin.	Humanites and Theology	Law	Arts	LTH Technical University	Medicine	MAX IV	Science.	Social Sciences	LU Special Branches	TOT
Total Approximately	315	4	427	112	73	1205	1152	91	815	495	40	4726
Fraction	0,07	0,00	0,09	0,02	0,02	0,25	0,24	0,02	0,17	0,10	0,01	1,00
Number of panels out of 35 panels in total from fraction above	2,33	0,03	3,16	0,83	0,54	8,92	8,53	0,67	6,04	3,67	0,30	35,02
Final number of panels out of 35 panels in total	<b>2</b>	<b>0</b>	<b>3</b>	<b>1</b>	<b>1</b>	<b>9</b>	<b>9</b>	<b>1</b>	<b>6</b>	<b>3</b>	<b>0</b>	<b>35</b>

# RQ20 structure at University level



# RQ20 structure at faculty-level





# For example...

Joint Faculties of  
Humanities &  
Theology

Panel H1

Research Environments  
(UoA:s)

- |              |            |
|--------------|------------|
| 1. Ark-Antik | 5. Kultur3 |
| 2. Hist      | 6. Uvet1   |
| 3. Kultur1   | 7. Uvet2   |
| 4. Kultur2   | 8. Sol1    |

Panel H2

Research Environments  
(UoA:s)

- |         |         |
|---------|---------|
| 1. Sol2 | 5. Sol6 |
| 2. Sol3 | 6. Sol7 |
| 3. Sol4 | 7. Fil1 |
| 4. Sol5 | 8. Fil2 |

Panel T

Research Environments  
(UoA:s)

- |         |
|---------|
| 1. Ctr1 |
| 2. Ctr2 |
| 3. Ctr3 |
| 4. Ctr4 |

## AUTUMN 2019 SELF-EVALUATION PHASE

Self-Evaluation



The self-evaluation instructions are delivered to the research environments by June 14 and the process itself started in mid-August.

The self-evaluation is governed by Appendix 1 to the Project Plan and comprises reflexions on the following themes:

*A. Overarching summary*

*B1. Leadership*

*B2. Collegial culture*

*B3. Quality ecosystem*

*B4. Transversal themes*

*C. Final Remarks*

- When responding to the questions A-C above, please refer to **the background material** (financial conditions, publication patterns, impact) when appropriate.
- The self-evaluation should not exceed **7000 words, excluding figures**.
- Last day for submission of the self-evaluation report from each research environment to the RQ20 office is **December 20 2019**.

## Base Data / Background Material

### Why?

Supports analysis about the research quality and future developments within the research environments (when appropriate). It can be understood as a backdrop to the self-evaluations.

### How?

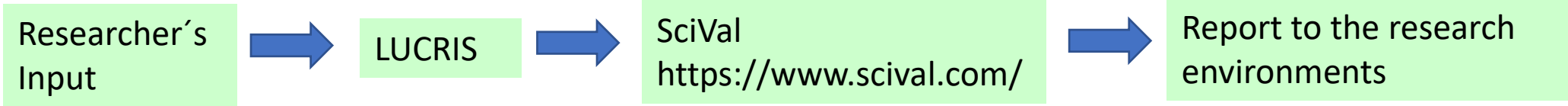
Is produced on a research environment basis by the University Library, Lucris-team and Economists.

### What?

1. **Financial summary, 2018** (e.g. resources used for undergraduate education, direct government funding of research, and external funding of research)
2. **Publication patterns, 2014-2018** (e.g. articles, books, book chapters, and reports and other publications and forms of research outlets, as well as a **bibliometric analysis** of citation patterns/impact)

### When?

Made available late September/early October



	2014	2015	2016	2017	2018	Overall
P	Number of Publications per year					
C	Number of citations per year					
C/P	Average Number of citations per publication and year					
Top 10%/1%	Fraction of publications per year that is part of the 10%/1% most cited publications in their field (according to Scopus classification of publications/Journals)					

SPRING 2020  
EXTERNAL ASSESSMENT PHASE

During Spring 2020, External advisors will work with the self-evaluations from the 32 subject panels.

Suggestions for external advisors was submitted by the faculties, panels and/or research environments during May – August 2019

Identification of all external advisors will be ready by December 2019.

## SPRING 2020 EXTERNAL ASSESSMENT PHASE

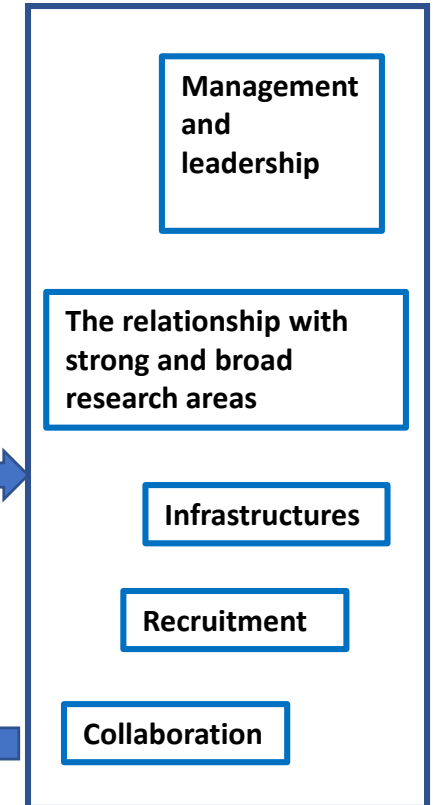
However, a university is more than the sum of its parts !

The five **Transversal Panels** will cover important issues that are critical to the university in its entirety – issues that pertain to the standing and further development of the research environments, and subsequently for the university as a whole.

These panels **will start to work once the self-evaluations are ready** and they will obtain their information from:

- Selected parts of the the self-evaluations made in the 35 “organic” panels
- Other sources (such as regulatory documents, policy documents, results of internal/external evaluations) made available by the RQ20 office.

- We estimate 5 Expert Advisors per panel
- Recruitment starts October 1 2019
- 2-3 Days site visit per panel during Spring 2020 (not May 4-8)
- The reports from the transversal panels will be part of the RQ20 result





## Important RQ20 events in 2020:

### **9th of January:** Preparatory meeting with panel chairs

- Each external panel hold one appointed chair person = 32 chair persons in total
- These are tasked with:
  - ✓ Coordinating the evaluation work within their panel before/during the site visit
  - ✓ Overseeing the writing process of the report during/after the site visit
- Aim of meeting is to inform and prepare chair members about the evaluation process:
  - ✓ Provide information about the project
  - ✓ Clarify expectations/responsibilities (on both sides)
  - ✓ Answer questions



# Transversal panel site visits 2020:



## 4th-8th of May: Site visit by external subject panel advisors

- **RQ20:s major event!**
- Main aim is for the external panels to:



- ✓ Assess the self-evaluations and meet with the respective research environments
- ✓ Begin the process of writing a report comprising their impressions, their feedback and suggestions for improvements (deadline 30<sup>th</sup> of June)
- ✓ Hopefully, enjoy doing it!